

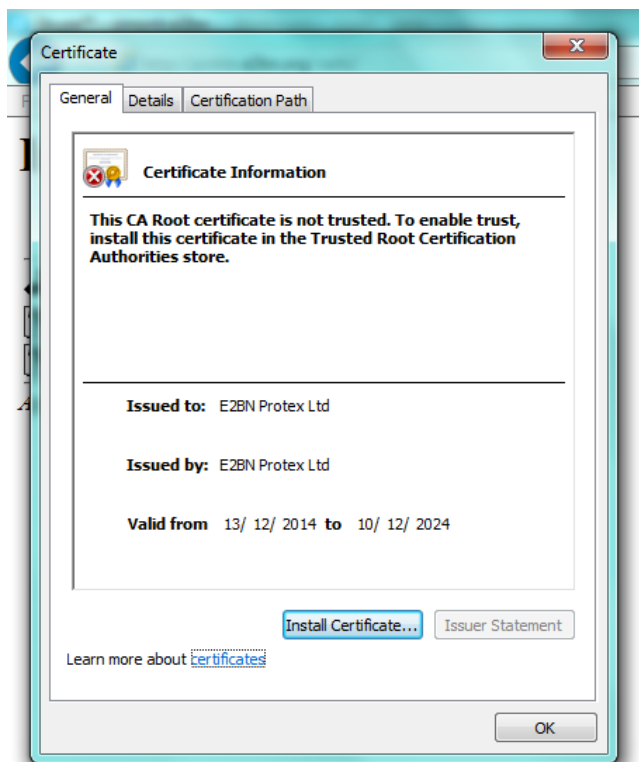
E2BN Filtering Root Certificate Installation Windows IE 8 and Above

<http://protex.e2bn.org/certs/>

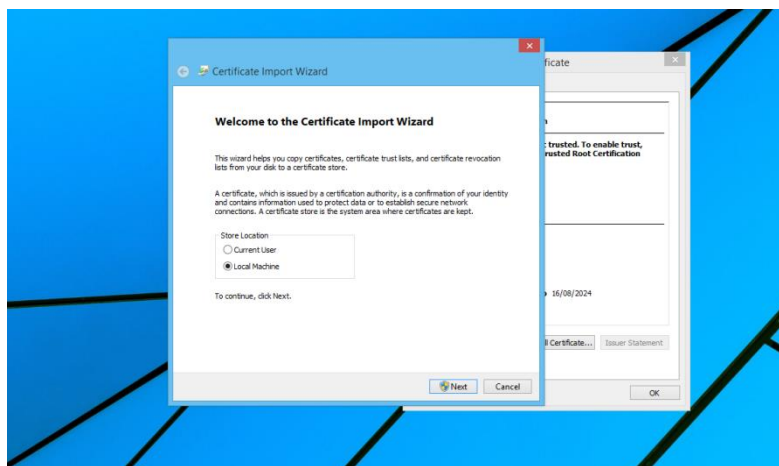
Please download the .crt certificate file from the website link above.

Once you have downloaded the correct certificate file, select Open and accept any UAC warnings

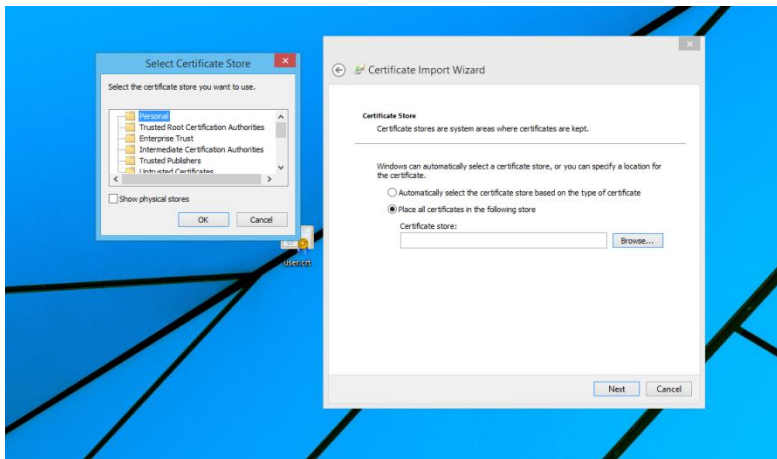
You should now be presented with a screen similar to below. Press Install Certificate to start the wizard.



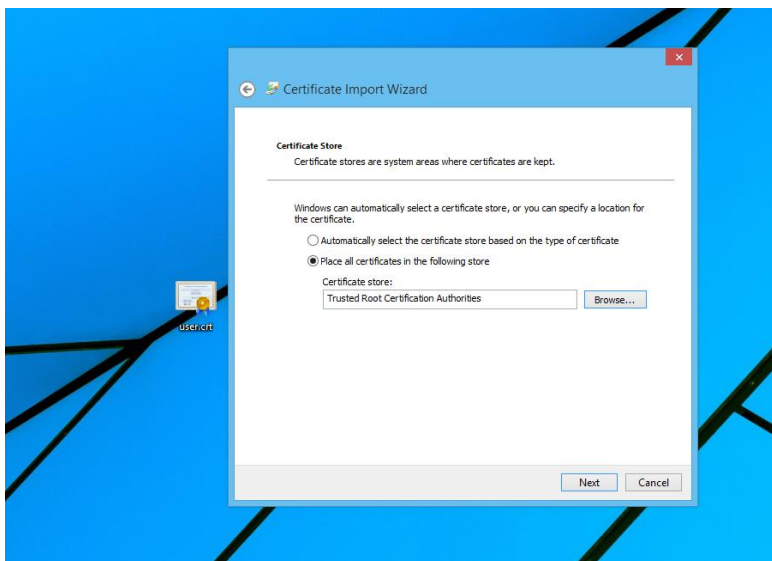
Select store location as "local machine"



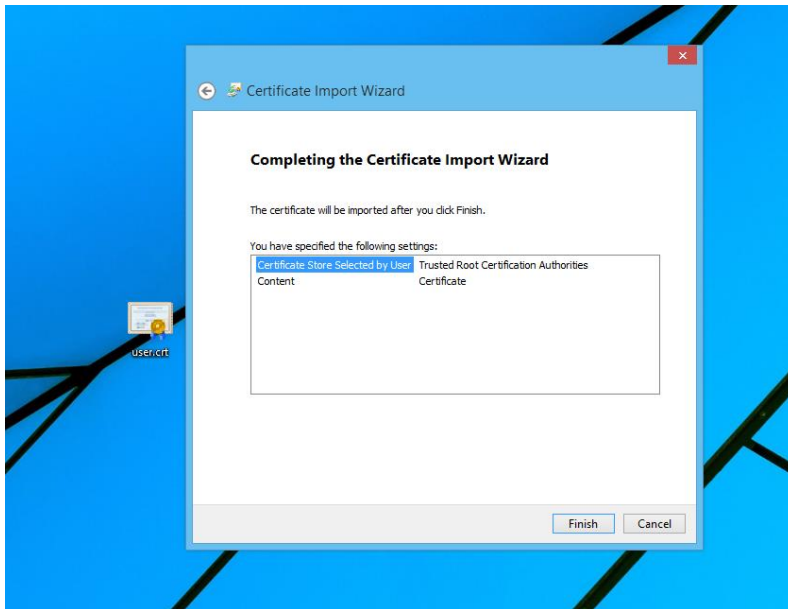
You will be asked where you would like to install the certificate.



Install the certificate in the **Trusted Root Certification Authorities** directory shown in the image below, if you do NOT install the certificate in this directory Protex will NOT function correctly.



Click next and then finish completing the process.



You are now ready to browse the internet safely using E2BN Protex SSL content filtering.

